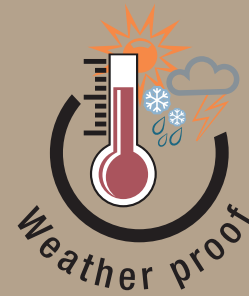




NEX TIME



Garden Collection



## Dear NeXtime friends,

When you're enjoying the outdoor activities, you can now keep track of time, and simple weather condition like humidity and temperature in the most relaxed way without having to go back to the house or searching on your phone to check.

Let's take a look at our garden collection that are both functional and ornamental at the same time.



Outdoor/  
Indoor



Thermo-  
meter



Hygro-  
meter



Tide



Silent  
movement



Baro-  
meter



Enjoy your time in style with these lovely new designs! The clocks are suitable for indoor and outdoor use.



### Prunus • 4314

Wall clock • 30.5 cm Ø

Plastic • Black







### Silene • 4316

Wall clock • 30.5 cm Ø  
Plastic • Black



### Knautia • 4317

Wall clock • 30.5 cm Ø  
Plastic • Black



### Anethum • 4315

Wall clock • 30.5 cm Ø  
Plastic • Black







### Marigold • 4313

Wall clock • 30.5 cm Ø

Plastic • Black

Time + Temperature (°C)



**Daisy • 4319**  
Wall clock • 25.5 cm Ø  
Plastic • Black  
Time + Temperature (°C) + Humidity





### Jasmine • 4318BR

Wall clock • 23.5 cm Ø

Plastic • Black

Time + Temperature (°C) + Humidity



### Jasmine • 4318WI

Wall clock • 23.5 cm Ø

Plastic • Black

Time + Temperature (°C) + Humidity



## Tide clock

A tide clock is a clock, besides telling time, that keeps track of the Moon's apparent motion around the Earth.

Tides are the rise and fall of the levels of the ocean. They are caused by the gravitational pull of the Sun and Moon as well as the rotation of the Earth. Tides cycle as the Moon rotates around the Earth and as the position of the Sun changes. Throughout the day the sea level is constantly rising or falling.

Due to the Moon's orbital prograde motion, it takes a particular point on the Earth (on average) 24 hours and 50.5 minutes to rotate under the Moon, so the time between high lunar tides fluctuates between 12 and 13 hours.

A tide clock is divided into two roughly 6 hour tidal periods that shows the average length of time between high and low tides in a semidiurnal tide region, such as most areas along the Eastern margin of the Atlantic Ocean and along most of North and South America.







This is a wall clock that provides 2 functions: Time and Tide status  
 When we talk about tide status, it is more precisely about the time remaining before low tide and high tide. A tide clock is a useful device which allows you to know in the twinkling of an eye if the tide is going down or up at your sea port or surf spot. Great reference for fishing, boating, surfing and all kinds of water activities!

### **Tide • 4321BL**

Wall clock • 22 cm Ø • Metal  
 Galvanized silver  
 Time + Tide  
*(not weatherproof and  
 not for outdoor)*



### **Tide • 4321WI**

Wall clock • 22 cm Ø • Metal  
 Galvanized silver  
 Time + Tide  
*(not weatherproof  
 and not for outdoor)*



## Cottage

These nice metal series in galvanized silver and warm sand colour are great for the garden as well as for indoor use. Single function focussed, these devices provide for every garden with direct information of time, temperature or pressure at a glance!



### Poppy • 4301GA

Wall clock • 22 cm Ø

Metal • Galvanized silver



### Poppy • 4301BR

Wall clock • 22 cm Ø

Metal • Brown





### Lily • 4302GA

Thermometer • 22 cm Ø

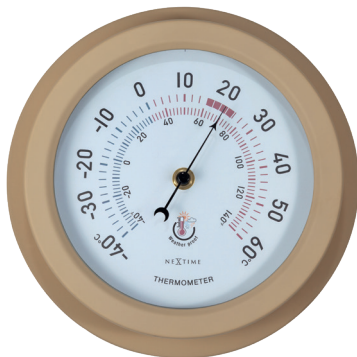
Metal • Galvanized silver



### Orchid • 4303GA

Barometer • 22 cm Ø

Metal • Galvanized silver



### Lily • 4302BR

Thermometer • 22 cm Ø

Metal • Brown



### Orchid • 4303BR

Barometer • 22 cm Ø

Metal • Brown





## Classic garden

This classic series matches very well with any outdoor atmosphere due to its material and design especially the stone items. These clocks are multi-functional that provides information of time, temperature and humidity. As always, they are also great decorative pieces suitable for both outdoor and indoor use!



### Aster • 4311

Wall clock • 26 cm Ø

Polyresin

Time + Temperature (°C & °F) + Humidity



### Aster large • 4320

Wall clock • 43.5 cm Ø

Polyresin

Time + Temperature (°C & °F)





### **Tulip • 4304GA**

Wall clock • 40.5 cm Ø

Metal • Galvanized silver

Time + Temperature (°C) + Humidity



### **Hyacinth • 4305BR**

Wall clock • 40.5 cm Ø

Metal • Brown

Time + Temperature (°C & °F) + Humidity



## Modern garden

The modern design of these clocks brings unconventional mood to the nature; yet a perfect and harmonious match for any interior atmosphere!



### Sunflower • 4306ZW

Wall clock • 50.8 cm Ø

Plastic • Black

Time + Temperature (°C & °F) + Humidity







### Clematis • 4307AR

Wall clock • 35 cm Ø

Aluminium

Time + Temperature  
(°C & °F) + Humidity



### Clematis • 4307ST

Wall clock • 35 cm Ø

Aluminium

Time + Temperature  
(°C & °F) + Humidity



Open face full  
color packaging



## Retail

Display fits the full collection. The display is delivered in knocked-down packaging (KD)



## Garden display

80 x 80 x 200 cm  
Wood • Beige



## **NEXTIME HEAD OFFICE**

Munterslaan 4  
2014 KW Haarlem  
Netherlands

P +31(0)23 5 100 900  
info@nextime.eu

## **NEXTIME HONG KONG OFFICE**

Unit 3, 7/F, Po Hong Centre,  
No. 2 Wang Tung Street,  
Kowloon, Hong Kong

P +852 3583 2340  
F + 852 3753 0389  
info.hk@nextime.eu

**[www.nextime.eu](http://www.nextime.eu)**